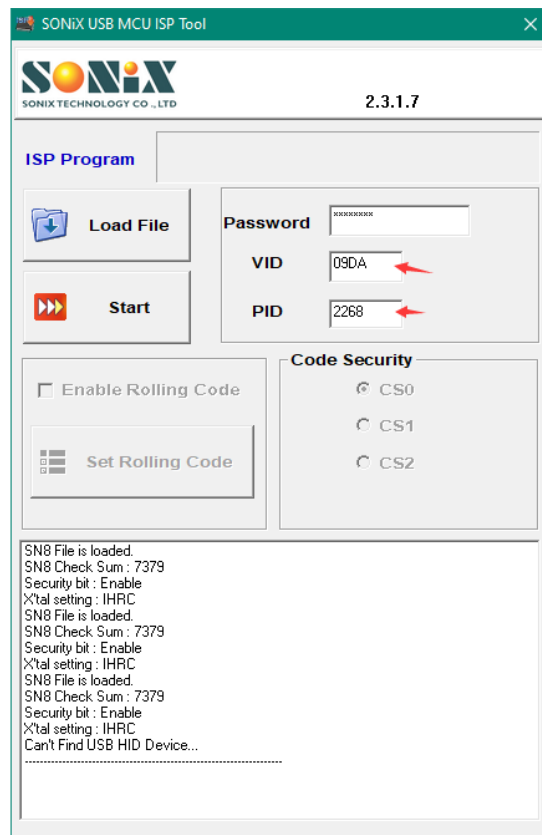
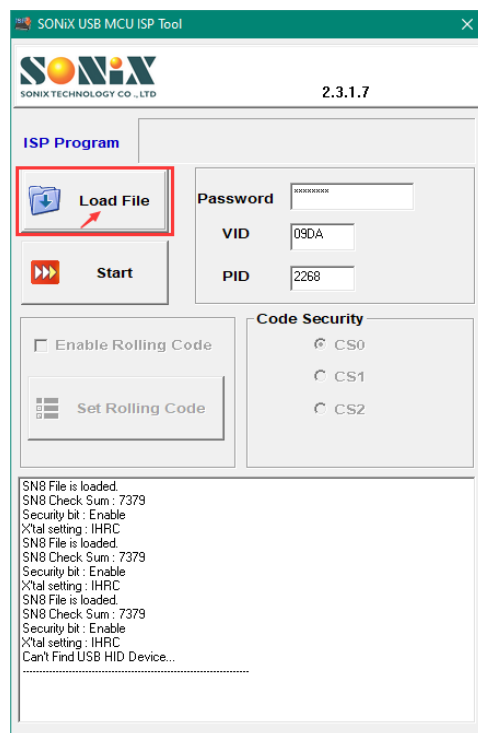


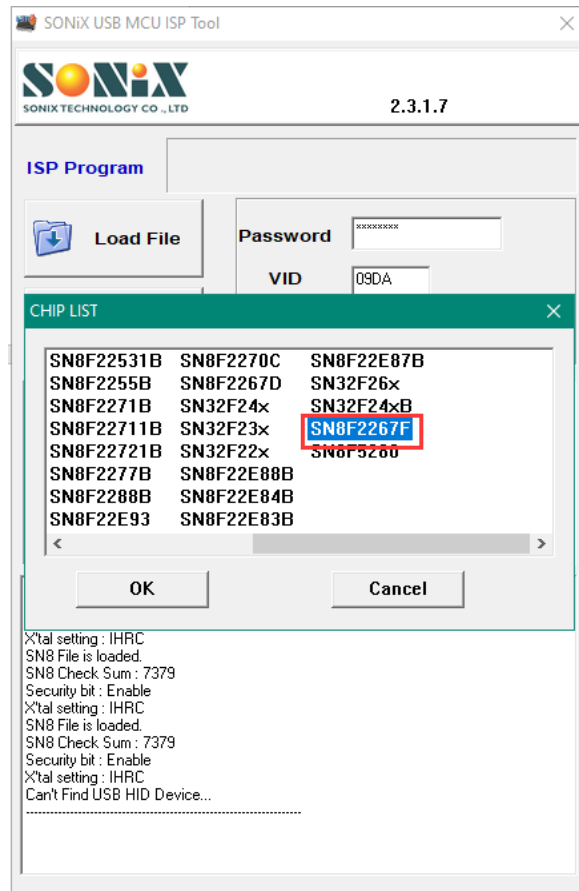
1. Save and extract "SONiX_USB_MCU_ISP_Tool_V2.3.1.7.exe" in disk D or later ones on PC.
2. Plug keyboard into PC
3. Check PID/VID of your keyboard and then fill them into the blanks
VID: 09DA / PID: 2268



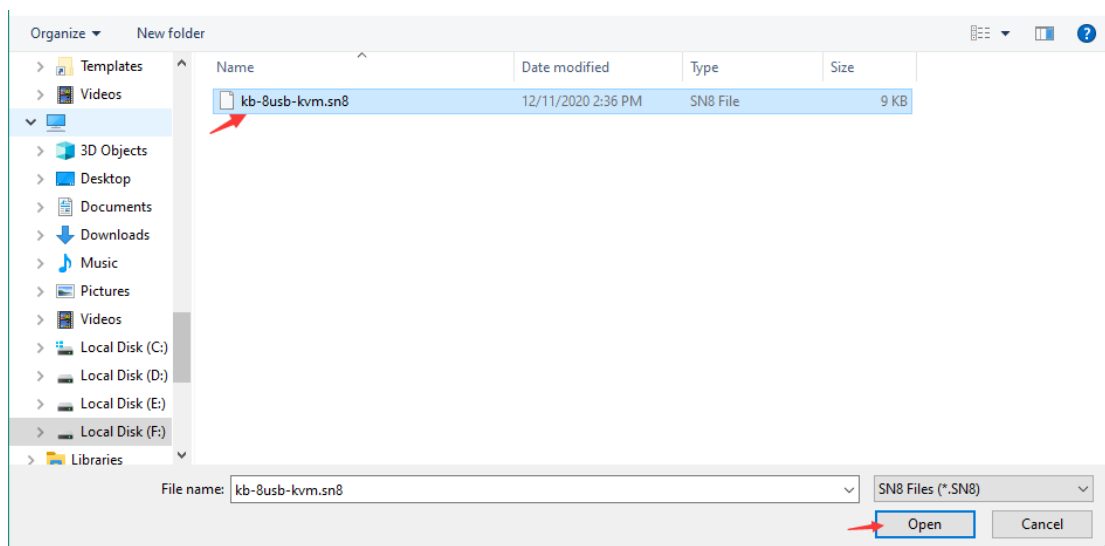
4. Click "Load File"



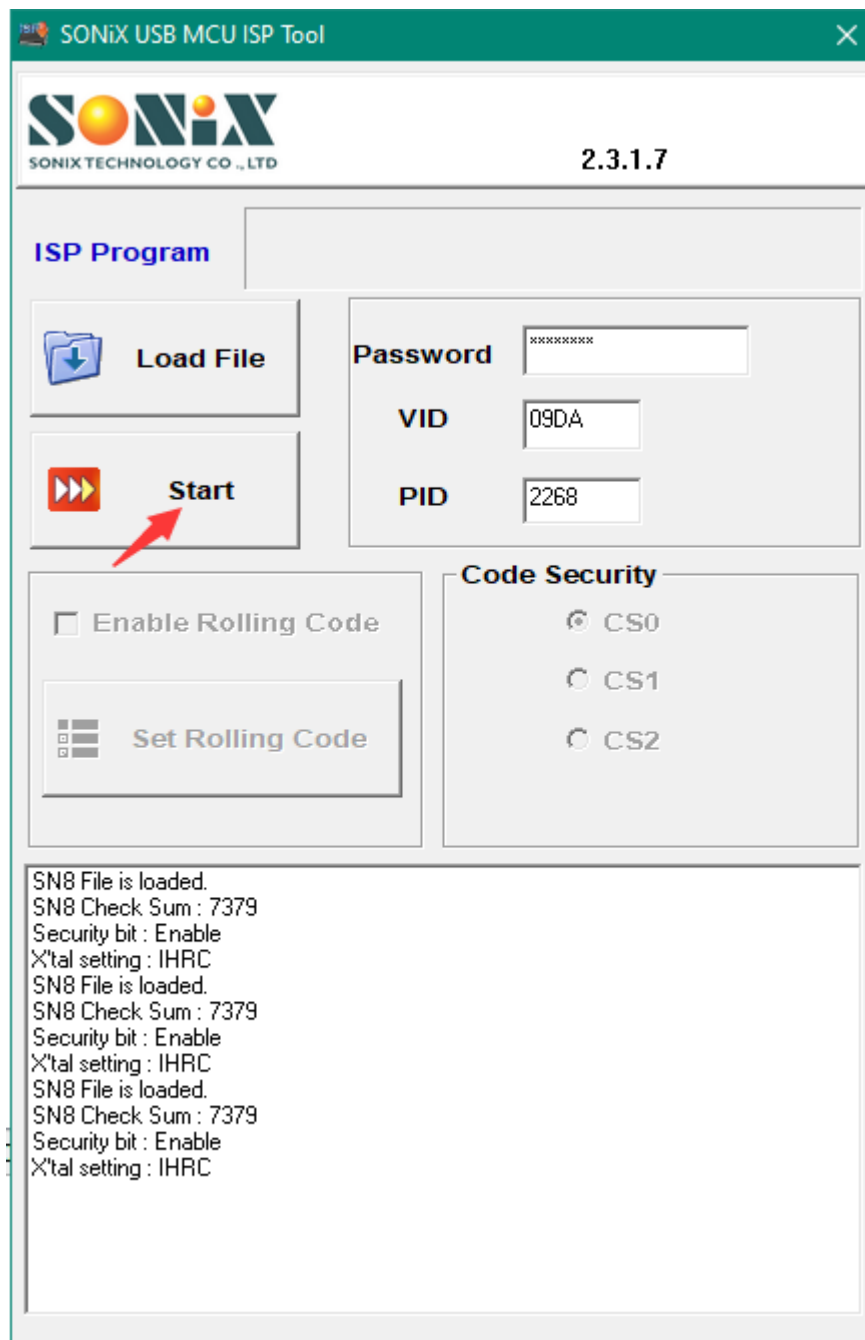
5. Choose "SN8F2267F" and then click "OK"



6. Find "kb-8usb-kvm.sn8" and then click "Open"



7. click "Start"



END